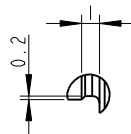
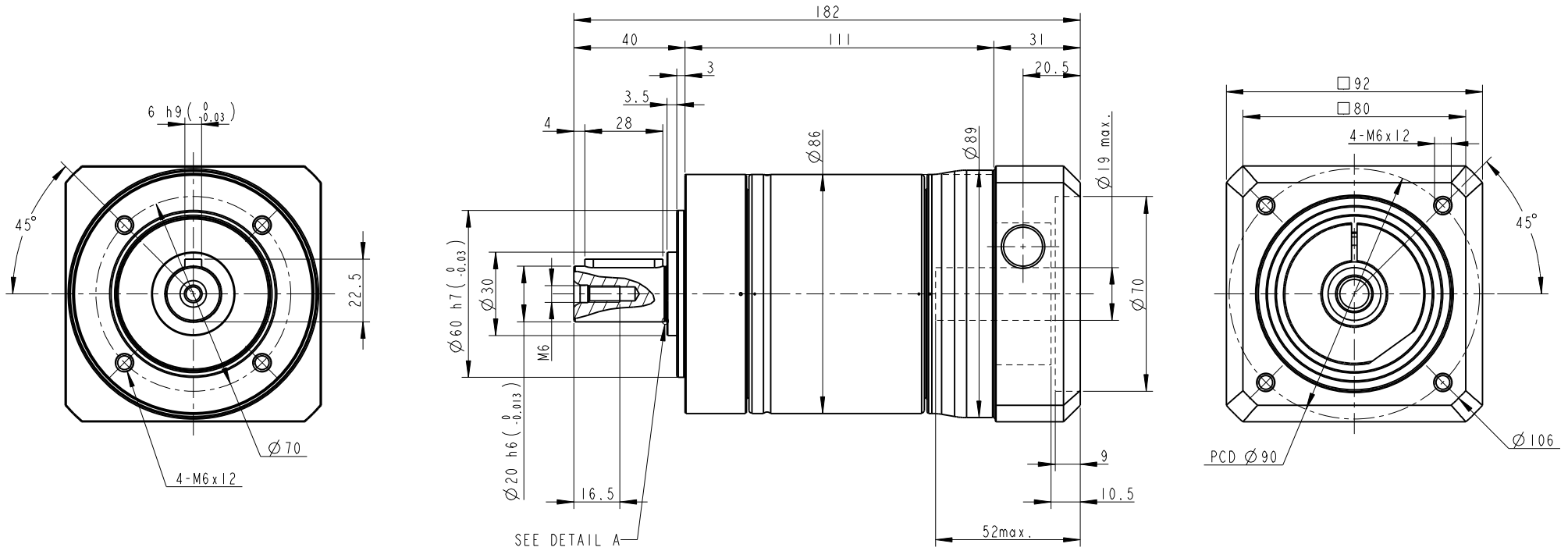

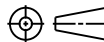


PG II 080 - 020 / DELTA ECMA-C10807(with oil seal)



INERTIA: 1.63 ~ 1.77 kg-cm<sup>2</sup>  
MASS: 3.9 Kg

|  |      |  |              |     |
|--|------|--|--------------|-----|
| PART NO.<br>PG2-080_2ST_19-P0411400503<br>AD-PE2-S19-M80-3 |      |  <b>APEX DYNAMICS, INC.</b> |              |     |
| APPROVALS  | DATE | TITLE<br>PG2-080_2 Stages_S19 , RATIO= 12-100<br>AND MOTOR FLANGE MOUNTING                                       |              |     |
| DRAWN<br>曹俊志   |      | DWG NO.<br>PG2-080_2ST_19-P0411400503  |              |     |
| CHECKED  |      | SIZE<br>A2   | SCALE<br>1:1 | REV |
| APPROVED   |      |                             |              |     |