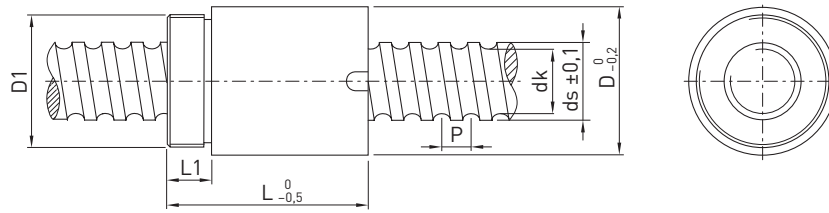


# Ballscrews

## Rolled ballscrews

### 4.4.2 Cylindrical single nut with screw-in thread RSIT



Sufficient lubricant supply to the shaft must be guaranteed via a lubricant channel in the adjacent construction.



Type	ds	P	D	D1	L	L1	dk	Dynamic load rating $C_{dyn}$ [N]	Static load rating $C_0$ [N]	Max. axial play [mm]	Mass [kg/piece]
R08-02.5T2-RSIT <sup>1)</sup>	7.7	2.5	17.5	M15 × 1	27.5	7.5	6.1	1,600	1,750	0.04	0.03
R10-02.5T2-RSIT <sup>2)</sup>	9.9	2.5	19.5	M17 × 1	25.0	7.5	8.1	2,100	2,630	0.04	0.04
R10-04T2-RSIT <sup>2)</sup>	9.9	4.0	24.0	M22 × 1	32.0	10.0	7.7	2,400	2,820	0.04	0.08
R12-04B1-RSIT <sup>1)</sup>	12.0	4.0	25.5	M20 × 1	34.0	10.0	9.5	4,200	5,700	0.04	0.08

All dimensions stated without a unit are in mm

<sup>1)</sup> Polyamide wiper on one side

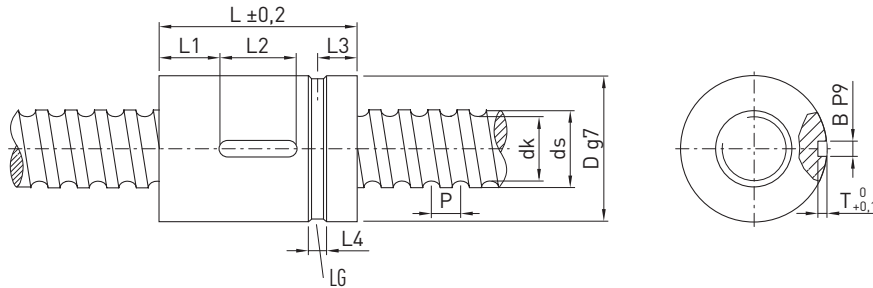
<sup>2)</sup> Without dirt wiper

- Reduced axial play on request
- Nuts with dirt wipers

Order example:

R	12	4	B1	RSIT	350	405	0.052
---	----	---	----	------	-----	-----	-------

### 4.4.3 Cylindrical single nut RSI



LG Groove for lubricant supply



Type	ds	P	D	L	L1	L2	L3	L4	T	B	dk	Dynamic load rating $C_{dyn}$ [N]	Static load rating $C_0$ [N]	Max. axial play [mm]	Mass [kg/piece]
R16-10T3-RSI	15.4	10	28	60	8	20	9.5	5	2.5	4	12.9	7,600	10,800	0.04	0.17
R20-10T3-RSI	19.9	10	34	60	20	20	12.0	4	2.0	5	17.5	11,300	12,600	0.04	0.35

All dimensions stated without a unit are in mm

- Reduced axial play on request
- Nuts with dirt wipers

Order example:

R	16	10	T3	RSI	350	405	0.052
---	----	----	----	-----	-----	-----	-------