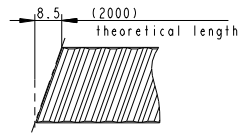


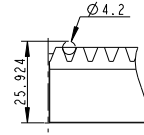


APEX DYNAMICS, INC.

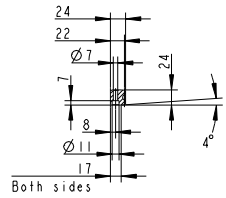
Ordering code	0206R200C10
Module	2
Number of Teeth	300
Pressure angle	20°
Helix angle	19.528° RH
Quality	06
Total Pitch Error (um)	GTf 38



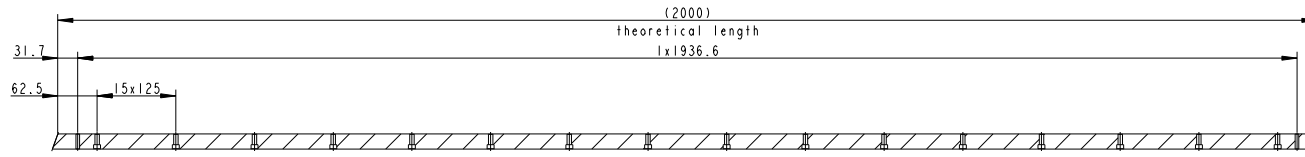
SCALE 5:1



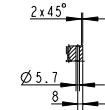
SCALE 5:1



SECTION A-A



SECTION C-C



SECTION B-B

