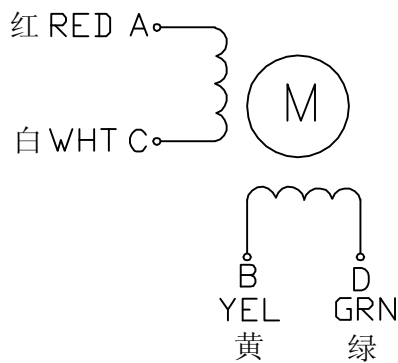
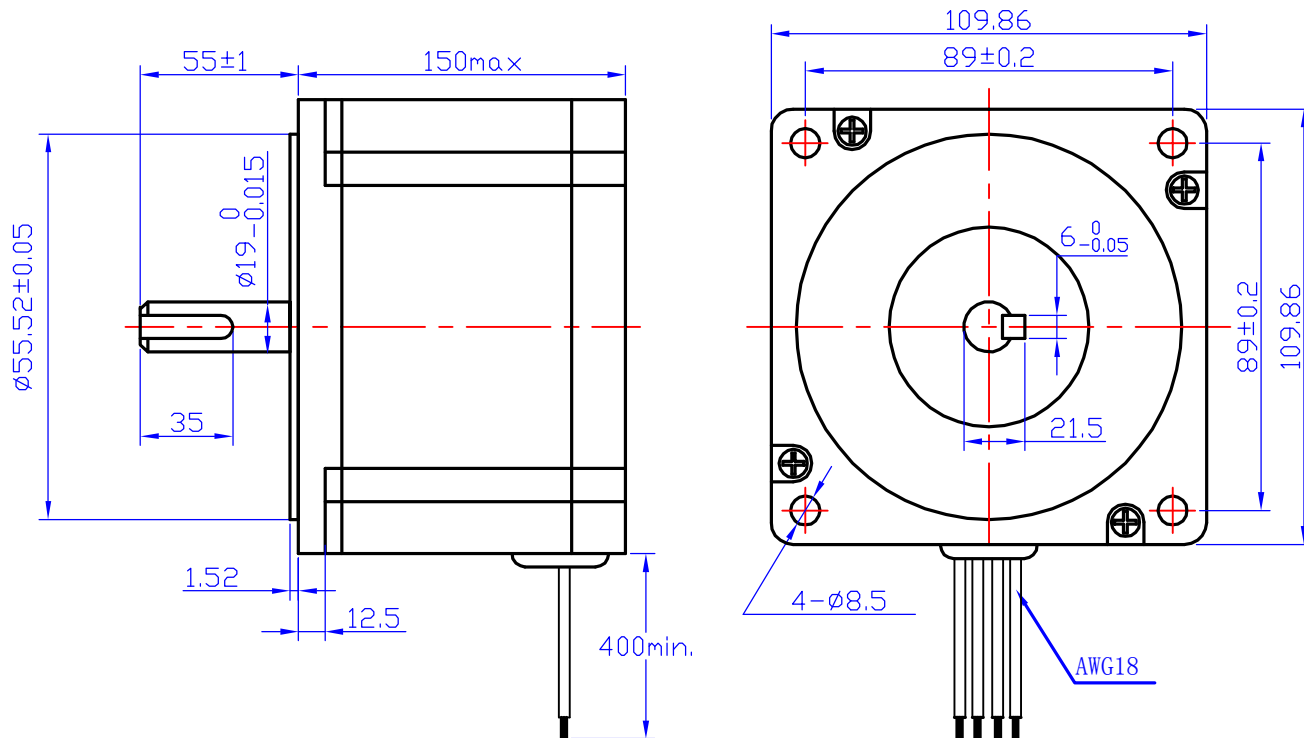


# HYBRID STEPPING MOTOR

Wiring Diagram:



Dimensions:  
(unit=mm)



## Electrical Specifications

STEP ANGLE	1.8 °/STEP	COMMENT
RATED VOLTAGE	5.2 V	
CURRENT	6.5 A/PHASE	
RESISTANCE	0.8 $\Omega$ /PHASE	
INDUCTANCE	15 mH/PHASE	
HOLDING TORQUE	21 N.m	
INSULATION CLASS	B	
ROTOR INERTIA	10900 g.cm <sup>2</sup>	
WEIGHT	8.4 Kg	
DETENT TORQUE	5.9 Kg.cm	

クワト	ハチソ	クワトオ・コカ	ヌマ	ネニシ
トヨ				
ノビ				
ナシ				

GD110STH150-6504A