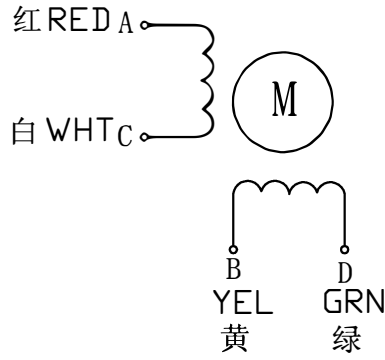
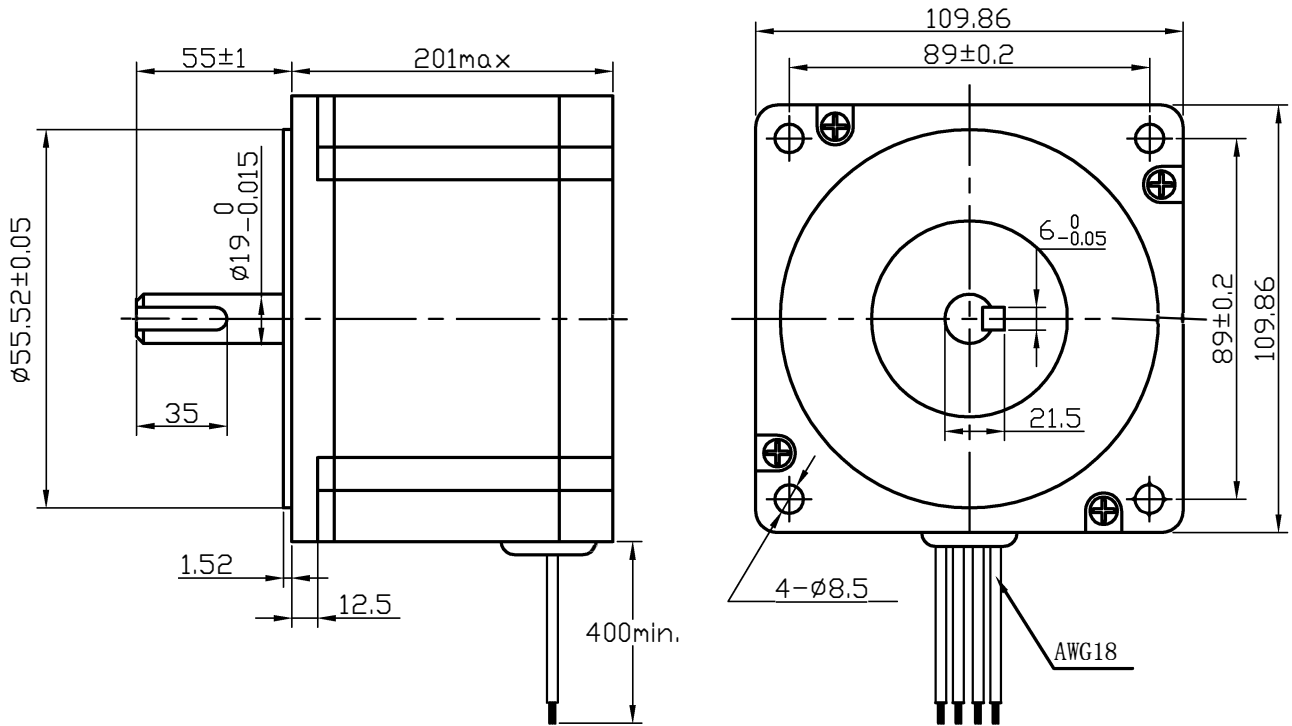


HYBRID STEPPING MOTOR MOD. GD110STH201-8004A

Wiring Diagram:



Dimensions:
(unit=mm)



Electrical Specifications

STEP ANGLE	1.8 ° /STEP	COMMENT
RATED VOLTAGE	5.328 V	
CURRENT	8.0 A/PHASE	
RESISTANCE	0.69 ± 10% Ω /PHASE	
INDUCTANCE	12.7 ± 20% mH/PHASE	
HOLDING TORQUE	28 N.m	
INSULATION CLASS	B	
ROTOR INERTIA	16200g. cm ²	
WEIGHT	11.7Kg	

更改	数量	更改单号	签名	日期
拟制				
审核				
批准				

GD110STH201-8004A