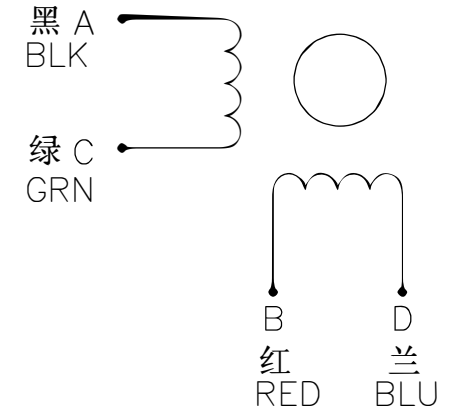
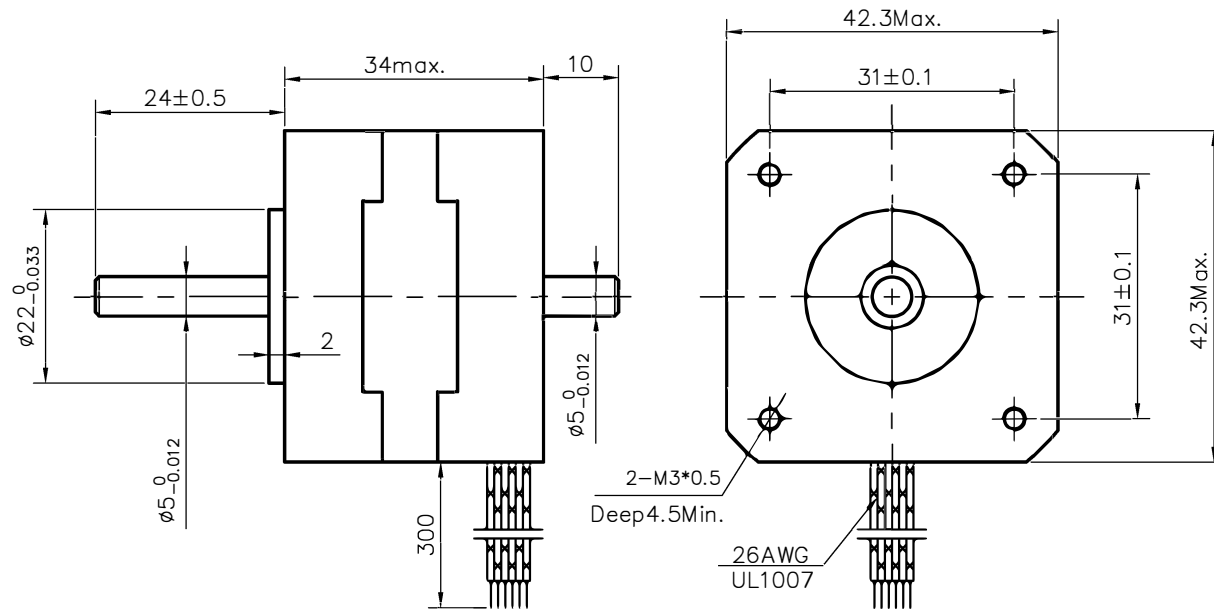


Dimension:  
Unit=mm

Wiring Diagram:



Specifications:

相数 Phase	2	Comment	
步距角 Step Angle	1.8	deg.	
电压 Voltage	12	V	
相电流 Current	0.4	A	
相电阻 Resistance	30	$\Omega$	
相电感 Inductance	35	mH	
静力矩 Holding Torque	2.8	kg.cm	
绝缘等级 Insulation Class	B		
重量 Mass	0.22	kg	

REV.	QTY.	No.	SIG.	DATE	Title:			GD42STH33-0404B
					Specification			
DESIGN			STD.		CLS.MAK	WEIGHT	SCALE	
CHECK								
PROC.			APPR.		PAGE:		OF PAGES	